

## Teat Care Product Catalogue



engineering for a better world



## Healthy Udders

### Don't compromise on teat condition.

Cows with a healthy udder produce better quality milk. In fact, the teat skin is probably the most valuable part of the cow, making it an incredibly important asset to protect in all dairy operations.

That's where FIL can help.

#### **Preventative techniques and teamwork**

We're all about empowering your team, helping them to understand what causes mastitis, how it affects production and how to prevent it.

Get your local FIL Area Manager on farm to train your staff on the fundamentals of a healthy udder:

- Why is teat health important?
- Challenges teats face
- Signs of unhealthy udders
- Teat scoring
- And we'll help you put in place a comprehensive teat care programme incorporating the right products, dilution rates, how to mix, checking spray patterns and spraying correctly for coverage.

#### **+ use good quality products**

FIL's modern teat care products contain special agents formulated to achieve healthy udders - iodine, chlorhexidine, emollients and Manuka honey. Our teat sprays, teat conditioner and teat creams are designed to protect teats, helping to prevent drying, chapping and infection. Protecting your most important asset.

*Preventative techniques and team work, quality products equals quality milk. It's a pretty simple formula. We're here to help you make it all add up.*

*\*On farm services by an FIL Area Manager outlined in this catalogue are only available to Dairy Farmers in New Zealand.*

## Teat Sprays

Whether you prefer chlorhexidine or iodine based teat sprays, you can be assured that FIL's range is made of top ingredients to protect your herd's udders.



### IODOSHIELD ACTIVE

An iodine-based teat spray with Manuka honey and emollient, for use as a post milking aid in the control of mastitis.

#### Why choose Iodoshield Active?

Iodoshield Active is an iodine-based teat spray. It's great for killing bugs especially in wet, muddy conditions or if your cows are in a barn or feed pad situation. The emollient aids in conditioning teats, reducing drying and chapping to help prevent mastitis.

#### Other things you should know about Iodoshield Active

- Iodine-based teat spray for the most challenging of bug killing environments
- Contains Manuka honey to help with healing, cracked and chapped teats
- **Contains 23g/L iodine and 55% mixed emollients** - this high ratio of mixed ingredients makes the solution very effective at killing bugs, but gentle on cows' teats
- The brownish red colour makes it highly visible on cows' teats
- Suitable for both automatic and manual sprayers

*Available in 20L, 100L and 200L*



### TEATSHIELD ACTIVE

A chlorhexidine-based teat spray with Manuka honey and added emollient, for use as a post milking aid in the control of mastitis.

#### Why choose Teatshield Active?

Teatshield Active has been built with an advanced emollient matrix to assist with cell rejuvenation and conditioning of cracked and damaged teats. Green in colour and highly visible on cows' teats, you will be able to see if optimum teat cover has been achieved.

#### Other things you should know about Teatshield Active

- **Contains 44g/L chlorhexidine and 55% mixed emollient** - this high proportion of mixed ingredients makes the solution effective in maintaining healthy teats
- Contains essential skin care components, including Manuka honey, to assist in restoring dry or cracked teats
- Manuka honey also helps the product to adhere to the teat for longer
- Green in colour, the product is highly visible on cows' teats
- Suitable for both automatic and manual teat sprayers

*Available in 20L, 100L and 200L*



### TEATSHIELD

A chlorhexidine-based teat spray with added emollient, for use as a post milking aid in the control of mastitis.

#### Why choose Teatshield?

Teatshield is a great product for all round use and maintenance. With emollient in the product, it aids in conditioning teats, reducing drying and chapping to help prevent mastitis.

#### Other things you should know about Teatshield

- Chlorhexidine-based teat spray for all round care and maintenance of healthy teats
- **Contains 44g/L chlorhexidine and 44% mixed emollients**
- Blue in colour, the product is highly visible on cows' teats
- Suitable for both automatic and manual sprayers

*Available in 20L, 100L and 200L*





## TEAT CONDITIONER

With changes to the recommended dilution rate of teat spray it is more crucial than ever to increase levels of emollient during early lactation.

### Why the need to add extra emollient?

Water and mud strip the protective natural oils from skin. The cold, wet, muddy conditions experienced during early lactation will induce hardening and thickening of teat skin, causing drying and chapping of the teat itself.

The resulting cracks and teat sores are painful, making cows uncomfortable during milking - so they often kick and stomp, plus milk let-down will likely be poor.

So, during early lactation or when teat condition is poor, it's important that there is additional emollient such as glycerine in teat sanitisers, helping to improve teat condition during the risk period.

### Other things you should know about Teat Conditioner

- Increases overall teat condition, leaving teats supple, less prone to drying and cracking and better protected
- For use in challenging periods, ie cold, wet, windy weather conditions often experienced during early lactation
- Contains high levels of glycerine and skin care emollients

*Available as 20L, 100L and 200L*

## Teat Creams and Salves



### ACTIVE TEAT CREAM

This is a uniquely formulated product, designed for the treatment and protection of cracked and chapped teats in dairy cows.

#### Why choose Active Teat Cream?

Active Teat Cream is an iodine-based antiseptic cream with Manuka honey which is quickly absorbed into the teat surface, to assist in the restoration of cracked, damaged and severely chapped teats.

#### Other things you should know about Active Teat Cream

- Always apply to teats after milking
- Antiseptic iodine and Manuka honey combination provide intensive care to severely cracked or chapped teats
- Iodine kills bugs while the honey helps to nourish
- Water soluble and non-greasy, easy to wash from hands

*Available in 2L pail and 500g flexi pack*



### EMOLLIENT SALVE

Protection barrier for teats, keeping them soft and supple.

#### Why choose Emollient Salve?

Emollient Salve is a waterproof lubricant for the protection of teats.

#### Other things you should know about Emollient Salve

- Always apply to teats after milking
- Antiseptic lubricant and emollient barrier
- Waterproof product will last on teats for longer in wet weather
- Assists in the prevention of mastitis by ensuring teats do not dry and crack

#### When to use?

During early lactation or at times when teat condition and udder health is challenged by harsh weather conditions.

*Available in 2L pail and 700g flexi pack*

# Teat Care Programme

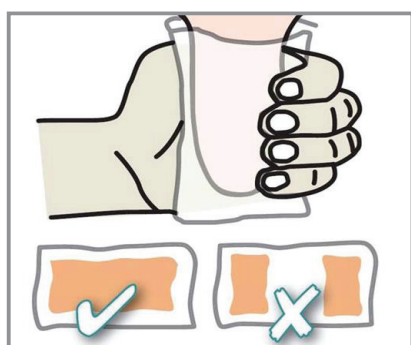
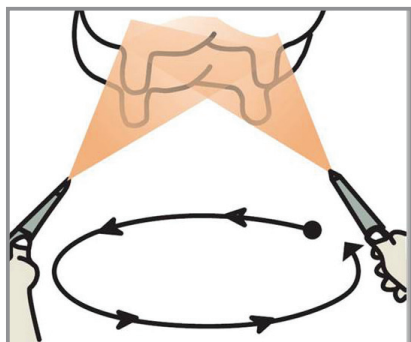
## How to mix

Teat spray should always be mixed by adding the product, including teat conditioner emollient, to the water.

1. Add water to 20L bucket
2. Measure teat spray in 5L jug and add to water
3. Measure Teat Condition in 5L jug and add to mixture
4. Stir mixture to combine

## How to spray correctly

It is important to spray in a circular motion. This will ensure full coverage of all teats. You can check to see how effective your spraying is by using a dry paper towel.



## Teat Spray Dilution Rates

Teat spray dilution rates have undergone a change due to residue testing.

It is now a requirement to mix teat spray at a 1 to 9 dilution rate or 10% product to 90% water (or 10% product, 10% emollient, 80% water).

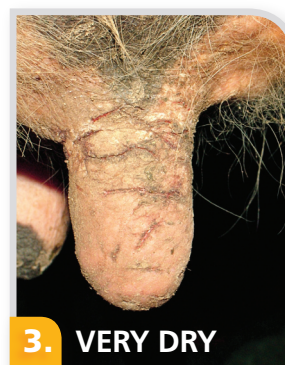
Because the teat spray is now more diluted, it is necessary to add an increased proportion of emollient Teat Conditioner to the mix, particularly at higher risk periods e.g. in spring.

### Dilution rates based on a 20L mix:

DURING EARLY LACTATION - HIGH RISK			
	IODOSHIELD ACTIVE	TEATSHIELD ACTIVE	TEATSHIELD
TEAT SPRAY	2L	2L	2L
TEAT CONDITIONER	3L	3L	3L
WATER	15L	15L	15L
ACTIVE LEVEL	2300ppm	4400ppm	4400ppm
EMOLLIENT IN USE	15%	15%	14%

MID LACTATION - MILD RISK			
	IODOSHIELD ACTIVE	TEATSHIELD ACTIVE	TEATSHIELD
TEAT SPRAY	2L	2L	2L
TEAT CONDITIONER	2L	2L	2L
WATER	16L	16L	16L
ACTIVE LEVEL	2300ppm	4400ppm	4400ppm
EMOLLIENT IN USE	12%	12%	11%

## Dryness & Chapping



### What are the causes?

- **Physical stress during milking:** stretching, excessive vacuum and over-milking
- **Windy, cold, wet or muddy conditions:** induce hardening and thickening of the teat skin
- **Mud:** draws moisture from the skin
- **Chemical damage:** incorrect mixing of teat spray or insufficient emollients

### What to look for?

- Horizontal cracking starting at the base of the teat
- Cracks on teats
- Muddy teats
- Flaky, scaly and rough skin
- Open lesions eg. cuts or sores

### What is the fix?

- Ensure using the correct teat spray and dilution rate
- Add extra emollient to teat spray
- Recommend Active Teat Cream as an extra protector

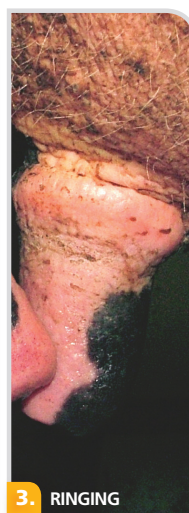
## Redness & Discolouration



1. NORMAL



2. RED DISCOLORATION



3. RINGING

### What are the causes?

- Over-milking
- Mismatched liners to shells
- Mismatched liners to teat size
- Unusually heavy clusters
- High milking vacuum
- Faulty pulsation

### What to look for?

- Redness directly after cup removal
- Blue in colour after cup removal
- Ringing at the base of teats

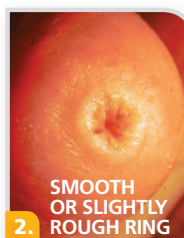
### What is the fix?

- Get a machine test done to correct any faults with vacuum or pulsation - a test during milking will be most effective
- Check liners and shells are correct & compatible
- Check liner condition and recommend replacing

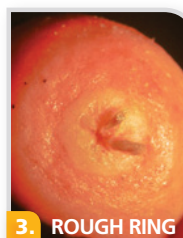
## Rough Teat Ends (Hyperkeratosis)



1. NORMAL



2. SMOOTH OR SLIGHTLY ROUGH RING



3. ROUGH RING



4. VERY ROUGH RING

### What are the causes?

- Vacuum levels
- High level of teat compression during liner closure
- Over milking, often by incorrect automatic cup remover settings or operator routines

### What to look for?

- Ring or rough ring at the teat end
- Open teat orifice
- Pin point bleeding

### What is the fix?

- Get a machine test done to correct any faults with vacuum or pulsation - a test during milking will be more effective
- Look at process on cups being removed when cow is finished milking
- Check liner and teat compatibility



## **We live our values.**

Excellence • Passion • Integrity • Responsibility • GEA-versity

GEA Group is a global engineering company with multi-billion euro sales and operations in more than 50 countries. Founded in 1881, the company is one of the largest providers of innovative equipment and process technology. GEA Group is listed in the STOXX® Europe 600 Index.

## **GEA New Zealand Ltd**

72 Portside Drive, Mt Maunganui 3116  
PO Box 4144, Mt Maunganui South 3149  
New Zealand  
Tel +64 7 575 2162 Fax +64 7 575 2161  
0508 434 569  
[www.gea.com](http://www.gea.com)